

MADEIRA-1R WW

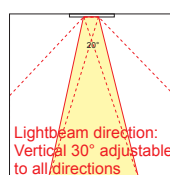
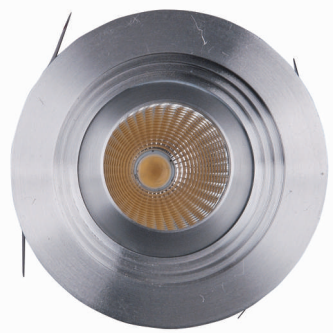
Ordernr: A0139700

Lamp type: recessed down-light
1x 6.3 W warm-white LED
Typical Luminous Flux: 460Lm (Tj=25°)
Typical Luminous Flux: 420Lm (Tcase=60°)
Typical forward Voltage Vf: 9V
Beam angle reflector: 20°
Lightbeam direction: 30° adjustable to all directions
Operating Power: constant current 700mA

IES-Files available

Housing: solid Aluminum
Reflector: Aluminum
Weight: 0.4 Kg
Dimensions fixture: ø92 x 120 mm
Classification: IP-44 Class III
Cable length: 500mm

Excluded (external) LED-driver



Always disconnect the mains of the LED driver before plugging or unplugging the LED's !!
The LED's will be damaged or destroyed because of the high voltage present on the driver output when there is no load connected. **Connect the main after all Led's and plugs are connected !**

Optional:

A9950010 LED dimmable PWM-Driver (1-10V & Push dim)

Max. load: 1x MADERA-3R WW
Prim.Voltage: 110V~240V 50~60Hz\ Max input current: 0.16A
Power factor λ.: ≈0.95 Sec.: 350-700mA 10/12/24V (dip-switch setting)
Max. forward Voltage: 49V
ta °C: -20° +50° tc °C: 75°
Protection against overheating, short circuit & overloads
Dimension L x W x H (mm): 103 x 67 x 21
Weight: 0.11 Kg
Protection: IP-20 Class II



A9950045 Powerdrive AC Constant current 100W LED Driver (DMX-512 / Dali)

- Power factor: > 0.94
- DALI, DMX / RDM, LedSync and 0-10V compatible
- Hybrid HydraDrive: 20-bit resolution
- Dimming control: smooth dimming from 100% to 0.1%, gamma-corrected curve
- High efficiency over a wide power and voltage range: 90% at full load, ≥ 87% above 50W output
- Maximum (rated) power available over wide LED voltage (30-60V) and LED current range (200-1,050mA)
- LED current configurable for each output separately
- Intuitive 3-button user interface for on-the-fly configuration
- LEDcode/NTC interface for robust thermal management
- ShowMaster: 9 default shows, up to 20 user-defined shows, uploadable via TOOLbox and PC software

Input
• Voltage: 120 - 277 VAC
• Current, max:
1A at 120V/60Hz
0.5A at 230V/50Hz
0.45A at 277V/60Hz
• Frequency: 50/60Hz

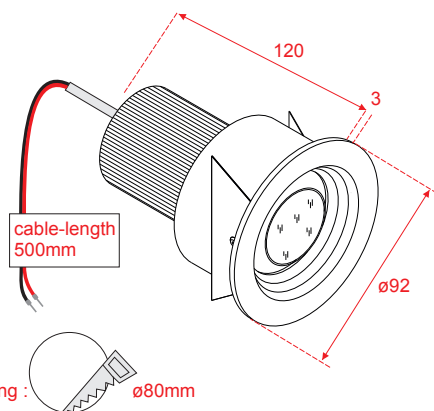
Output
• Voltage: 60V max, 57V typ
• Current range: configurable from 200mA to 1,050mA
• Power: 100W max

Dimensions
• 388 x 42 x 30 mm

Weight
• 705g



Dimensions in mm



Recessed downlights